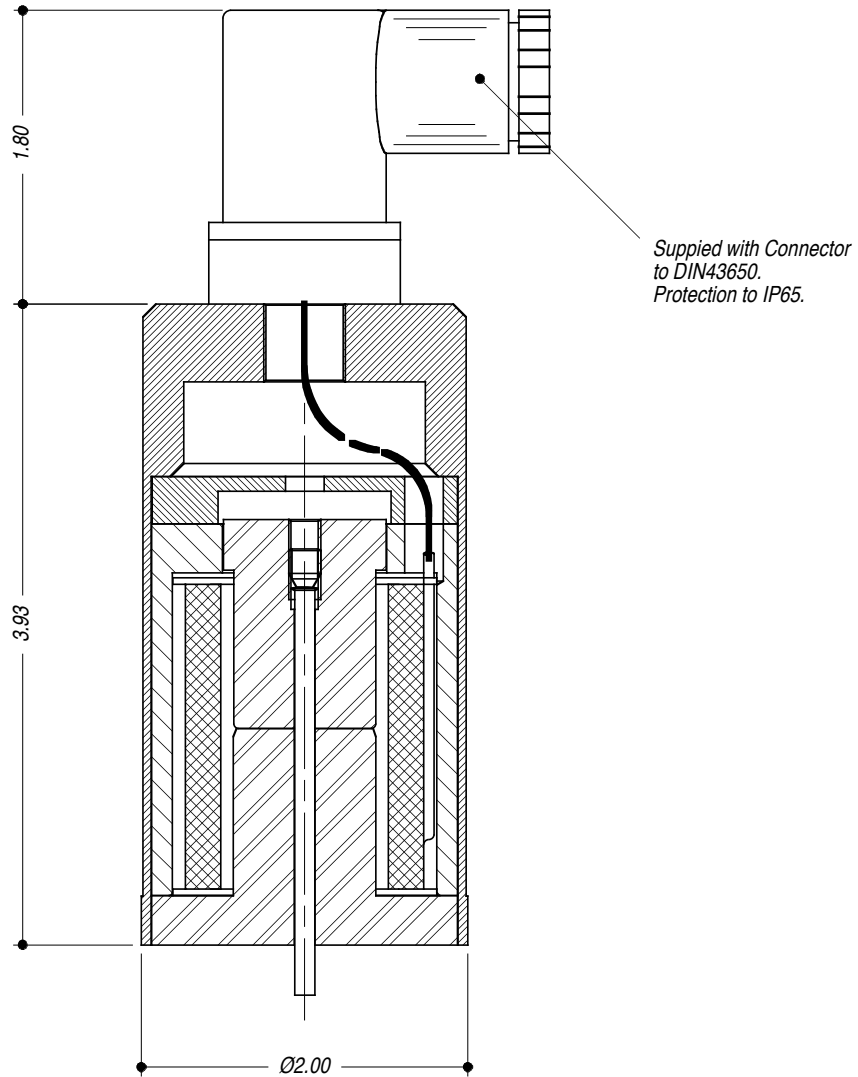


SOLENOID THRUSTER TYPE: HC



- STAINLESS STEEL (316 / 1.4404)
- ALL DIMENSIONS IN INCHES.



TECHNICAL SPECIFICATION		ORDERING EXAMPLE
Solenoid Type:	HC	HC
Voltage Rating:	24 V D.C.	
Power Rating:	15.5 Watts	
Dry Weight: (kg)	1.0	
Working Temperature Range:	-10°C to +60°C (Ambient)	